



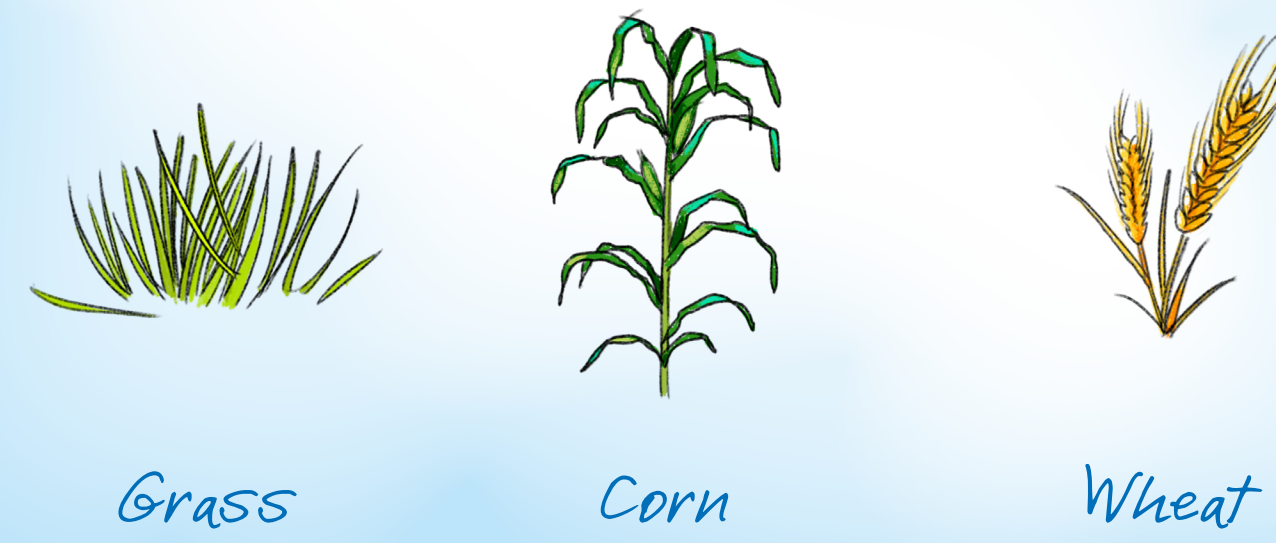
# WHAT DO OUR ANIMALS EAT?

OUR ANIMALS NEED TASTY, HEALTHY FOOD. THIS POSTER SHOWS YOU HOW FOOD IS MADE AND WHERE THE INGREDIENTS COME FROM.



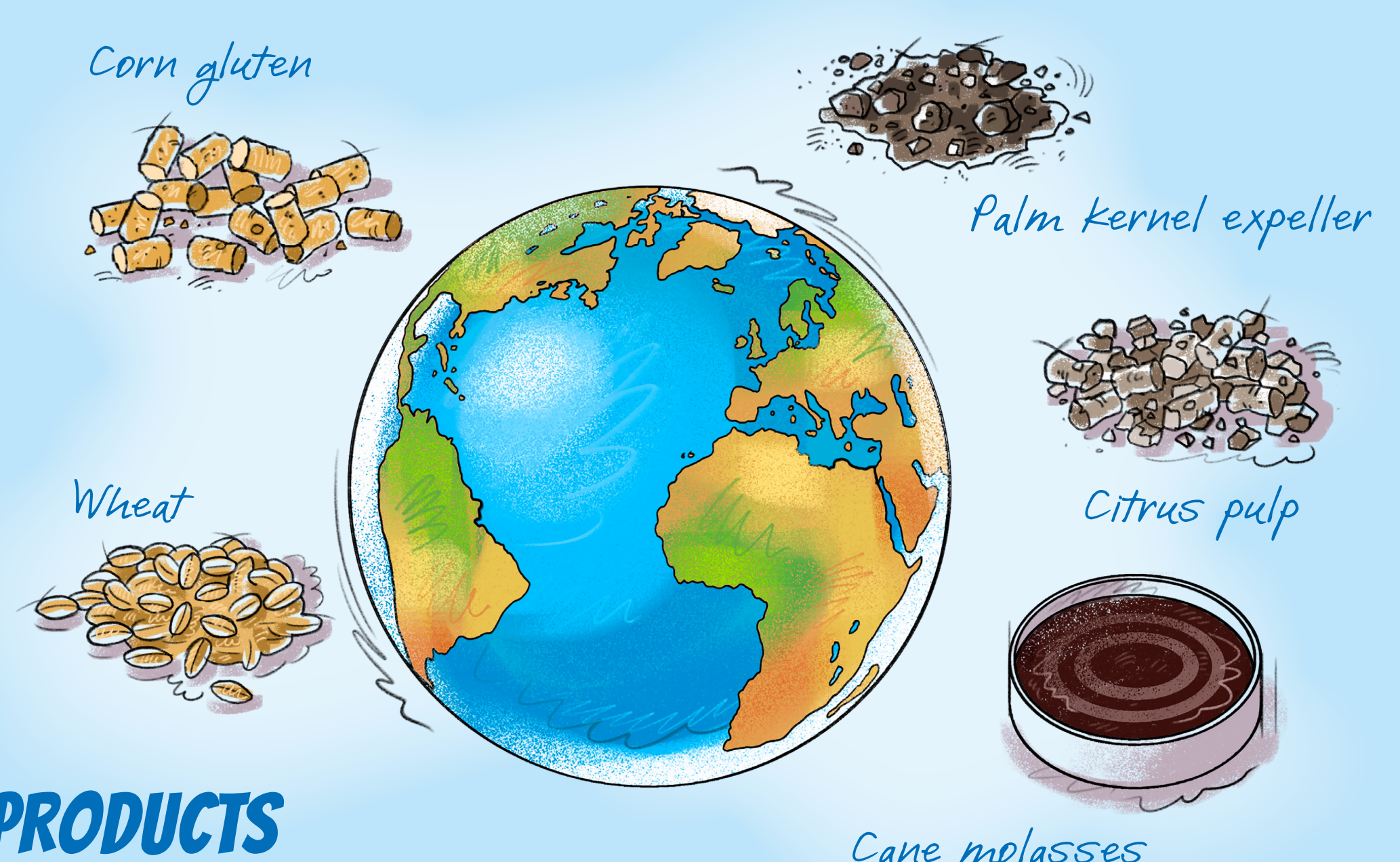
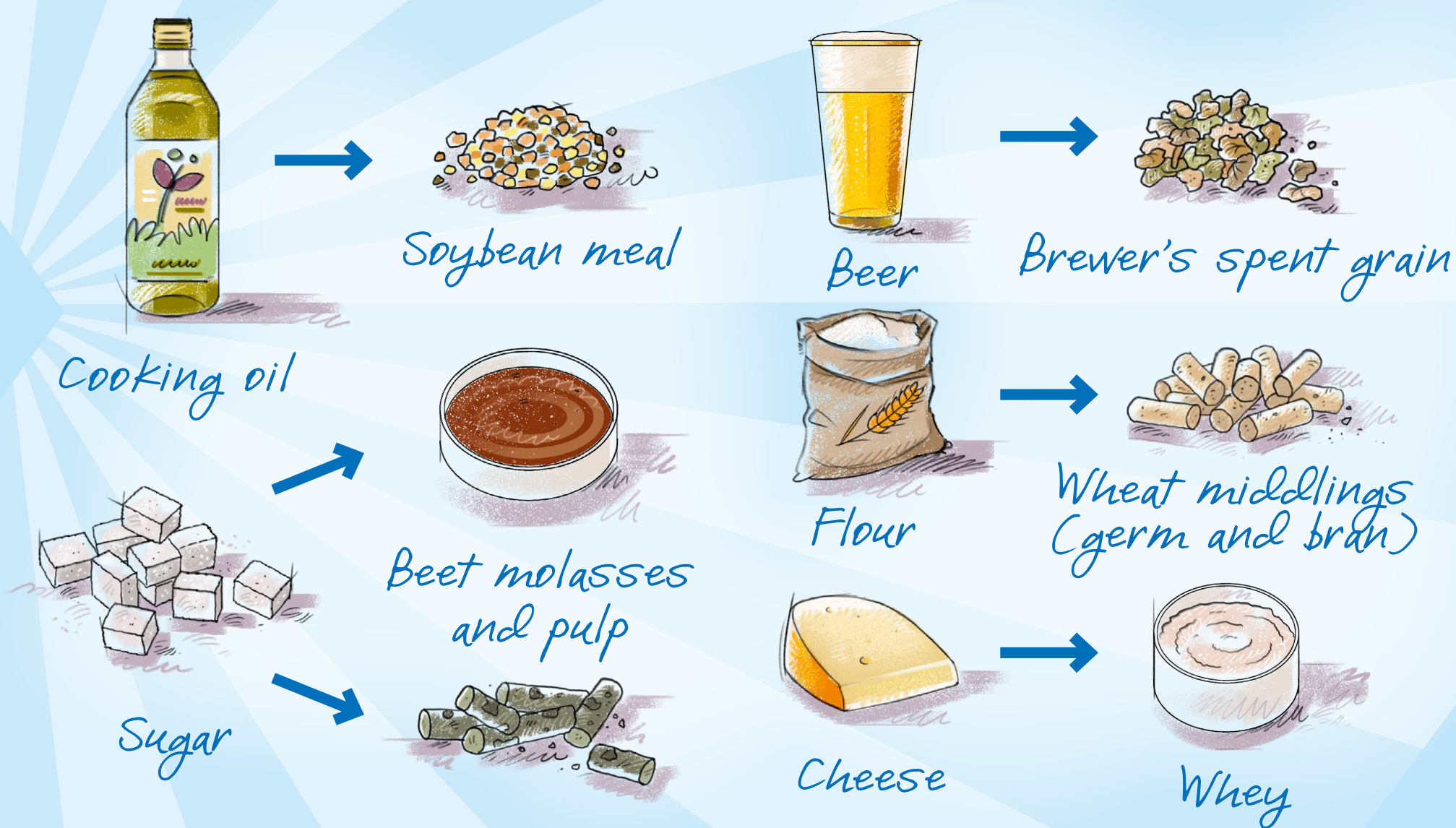
## WHERE DO THE INGREDIENTS COME FROM?

The ingredients for animal feed come from all over the world. Farmers in the Netherlands grow grass, corn and wheat. Grass and corn are used for cattle feed. Wheat is used as an ingredient in the animal feed we make. By-products (leftovers) from the food industry are also important ingredients. They are full of nutrients, such as protein. Animal feed often consists of more than 50% by-products, which are rich in moisture. These are reduced and dried out before they are delivered to our factory where we make the animal feed. Much of this is sold as a moisture-rich product directly to livestock farmers.



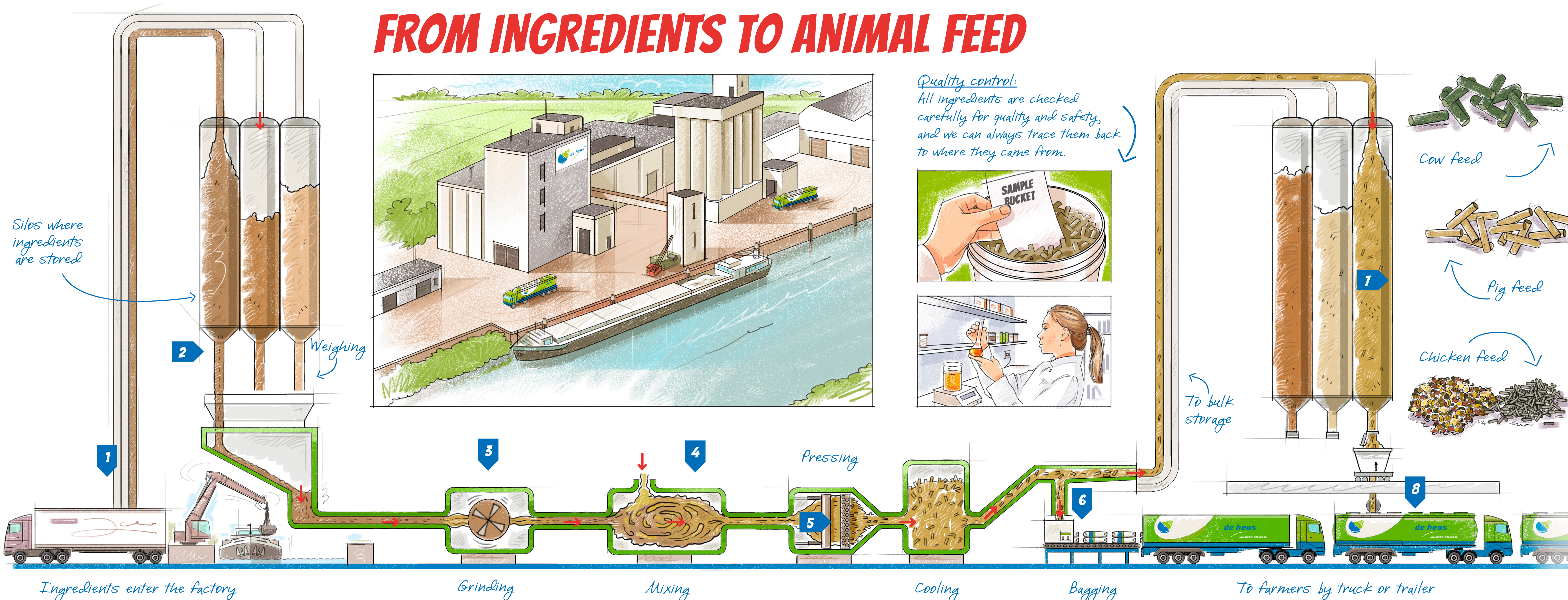
### FEED FROM THE PASTURE AND FIELD

## BY-PRODUCTS FROM THE FOOD INDUSTRY

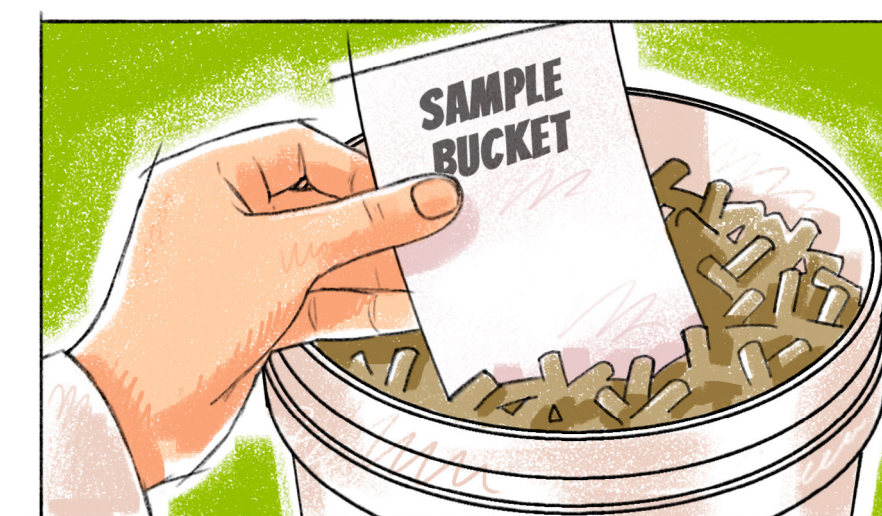


### BY-PRODUCTS FROM ABROAD

## FROM INGREDIENTS TO ANIMAL FEED



**Quality control:**  
All ingredients are checked carefully for quality and safety, and we can always trace them back to where they came from.



- 1 THE INGREDIENTS ARE DELIVERED BY SHIP AND BY TRUCK.
- 2 THE INGREDIENTS ARE WEIGHED ACCURATELY.
- 3 THE HAMMER MILL GRINDS THE INGREDIENTS FINELY.
- 4 AFTER MIXING AND ADDING VITAMINS, MINERALS, FAT AND OIL, THE MIXTURE NEEDS TO MATURE.
- 5 THE PELLETS THEN COME OUT OF THE PRESS AS EITHER LARGE, SMALL OR FINE, DEPENDING ON THE TYPE OF ANIMAL THE FEED IS FOR.
- 6 SOME OF THE FEED IS PUT INTO BAGS AND DELIVERED TO THE FARMERS.
- 7 COMPOUND FEEDS CAN ALSO BE SUPPLIED, INCLUDING AS GROUND ONLY AND MIXED, INSTEAD OF IN PELLETS.
- 8 THE BULK OF THE FEED IS DELIVERED TO THE FARMERS IN TRAILERS AND THEN STORED IN SILOS.

